



Escali Financial Systems AS

A brief company presentation



About us



Microsoft Partner

Silver Independent Software Vendor (ISV)

Escali is a software company

We develop:

- Treasury Management Solutions
- Portfolio/Asset Management Solutions
- Leasing Software
- Liquidity and Cash Management Solutions
- *All-in-one financial solutions delivered as SaaS (Online)*



Company summary

- Started in 2002.
- Privately owned, mainly by the employees.
- Head office in Scandinavia (Oslo / Bergen)
- Over 100 customers
- Cooperation with companies such as:
 - *Integration partners*: Bloomberg, Refinitiv, Infront, Nordic Trustee, Nordic Bond Pricing, DNB Markets, Central Bank of Norway, Fixrate, Nomentia (Trezzone, OpusCapita) and ERP-systems.
 - *Technical partners*: Microsoft, Cloudsys, Nomentia, Infront, Secbase
- Strong financial situation
- Total staff: 18 (14 employees, 4 temporary)
- Delivers all software solutions in the Cloud (Software-as-a-Service)
- High user/customer satisfaction (User Survey December 2020)
 - 79% are **very** or **extremely satisfied** with Escali as a vendor. The rest is **satisfied**.
 - 90% thinks the response on support is **quick**, while 90% think the support team have **very** or **extremely** high competency.
 - 85% of the users think the system is user-friendly.

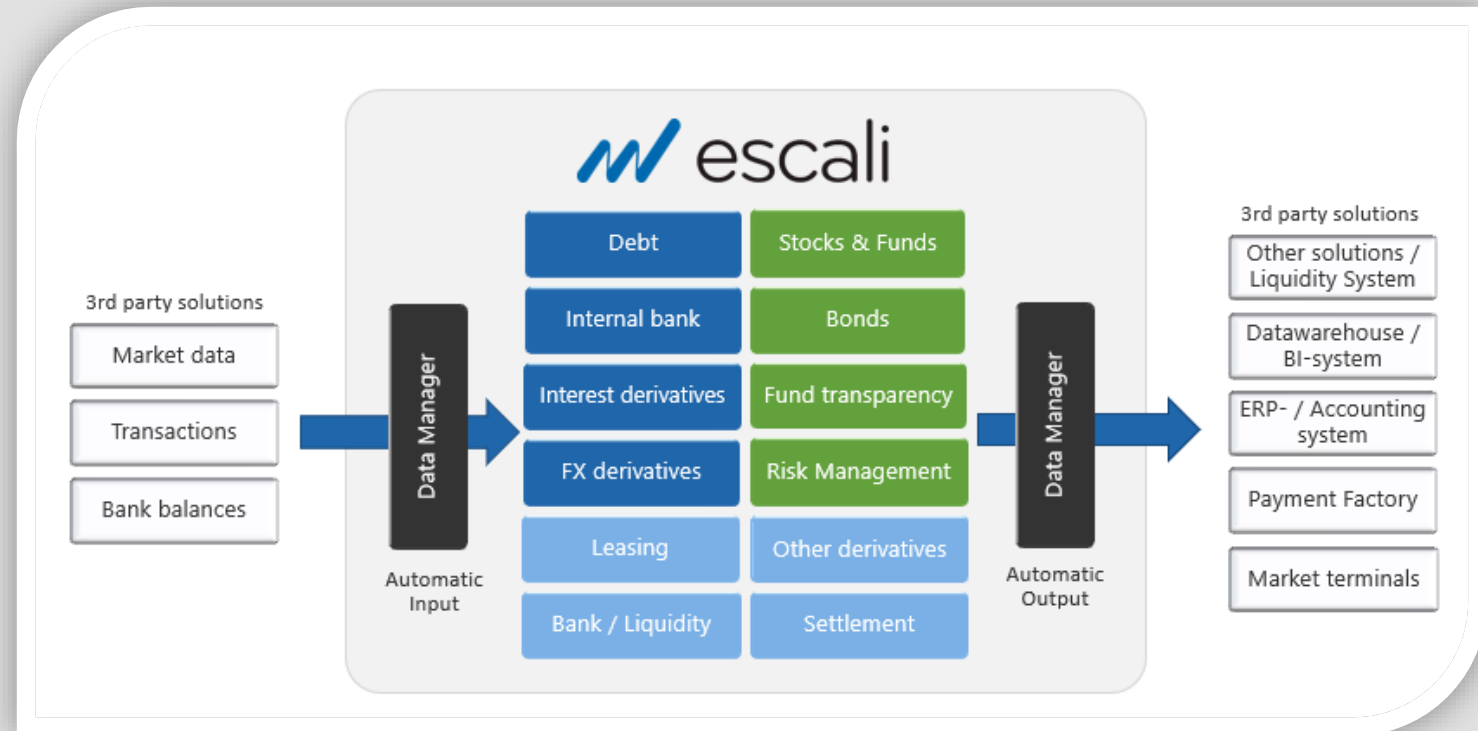
Our systems and services

- Escali Financials

Software solution for management of treasury operations, portfolios, financial instruments, leasing, cash & liquidity

Module based system:

- Debt
- Internal bank
- Interest derivatives
- FX derivatives
- Leasing
- Bank / Liquidity
- Other derivatives
- Settlement
- Stocks & Funds
- Bonds
- Fund transparency
- Risk Management



Our systems and services

- **Escali Data Manager (Robotics)**

Software solution (service) for automatic services, import and export of bank accounts, balances, market quotes, interest, accounts receivables and account payables, reference data and transactions.

- **Escali Reports**

- Report generator (Dynamical dashboards)
- Power BI embedded (BI technology)
- Several model-reports, makes it easy to edit

- **Related services**

- Outsourcing to cover illness, maternity leave and when key personnel quits.
- Project Management

- Installation and setup
- Workshops / Training
- Customisation
- Data import
- Reports in Excel and Power BI

All software solutions are delivered as Software-as-a-Service (Online)

References

PENSION FUNDS AND INSURANCE CORP

- Bergen kommunale pensjonskasse (Bergen)
- Gabler (Oslo / Bergen)
- Trondheim kommunale pensjonskasse (Trondheim)
- Sparebank 1 SMN pensjonskasse (Trondheim)
- Boligbyggelagens forsikringsselskap (Oslo)
- Møretrygd (Ålesund)
- Havtrygd (Bergen)
- Norwegian Hull Club (Bergen)
- Den Norske Krigsforsikring for Skib (Oslo)
- Oslo pensjonsforsikring (Oslo)
- Oslo Forsikring (Oslo)
- INSR Insurance (Oslo)
- Nordlys forsikring (Bodø)
- Bud og Hustad forsikring (Molde)
- Tromstrygd (Tromsø)
- Telenor Pensjonskasse (Oslo)
- Haugesund kommunale pensjonskasse

FUND/ASSET/ACCOUNTANTS

- Mertoun Capital (Oslo)
- Holmen fondsforvaltning (Oslo)
- Amesto Accounthouse (Oslo)
- Horisont kapitalforvaltning (Oslo)
- Trond Mohn Stiftelse (Bergen)
- Eikos (Oslo)
- Axera Business Partner (Oslo)
- Kraft Finans (Sandnes)
- Econpartner (Oslo)
- Compler Accounting (Bergen)
- Advanced Asset Manager (Bergen)
- Statement (Oslo)
- Norne Securities (Bergen)
- Bergen Capital Management
- Elgar Kapital
- Permian
- Malling & Co Forvaltning

INVESTMENT COMPANIES

- Strawberry (Oslo)
- Toluma Regnskap (Oslo)
- Caiano (Haugesund)
- UMOE (Bærum)
- Anaxo Capital (Oslo)
- Ferncliff / Tycoon Industrier (Oslo)
- Mustad Industrier (Oslo)
- Rasmussengruppen (Kristiansand)
- Varner Equities (Oslo)
- Kistefos (Oslo)
- Skeie Capital (Kristiansand)
- H-Invest (Bergen)
- Nistad Gruppen (Bergen)
- AG Holding (Drammen)
- Spencer Holding (Oslo)
- Orakel (Oslo)
- Eidesvik Invest (Bømlo)
- Bjørgvin (Oslo)
- Middelborg Invest (Tønsberg)
- Solstad Family Office (Skudeneshavn)
- Vatne Capital (Oslo)
- GC Rieber (Bergen)
- Profond (Bergen)
- Ufi Capital (Oslo)
- Hatteland (Nedre Vats)
- Mostun Invest (Tromsø)
- Holta Invest (Oslo)

amesto[®]

RASMUSSENGRUPPEN

bkp

umoe



KISTEFOS



escali



Escali Financials

*A software solution for the management of
financial instruments, leasing, cash & liquidity!*



Modules



Debt	Stocks & Funds
Internal bank	Bonds
Interest derivatives	Fund transparency
FX derivatives	Risk Management
Leasing	Other derivatives (Equity, Energy, Materials)
Bank / Liquidity	Settlement



Stocks and Funds



- Handles investments in stocks and funds such as:
 - Stocks
 - Private Equity & Limited Partnership units
 - Funds (Equity Funds, Combination Funds, Money Market funds, Hedge Funds, Bond Funds, Balanced Funds etc.)
 - Other objects (Real Estate, Art etc)
- Easy management of share dividends, stock splits, reverse stock splits, mergers and acquisitions, bonus issues, share repurchases and other corporate actions
- Handles fund dividends and interest
- Allows automatic import of quotes and stock / fund data (fund transparency)*
- Ability to import trades*
- Import of contract notes and A.I. technology to read them automatically*
- Measurement of performance and risk
- Supports short trading
- Supports future obligations on limited partnerships and private equity investments

* Requires Escali Data Manager, Services for import of contract notes and/or Fund Transparency module

Bonds

- Possible to register and import* master data
 - Interest calculation method
 - Maturity
 - Interest changes
 - Instalments
- Calculation of price (M2M), yield and duration
 - **M2M methods:** Discounted interest margin, net present value to re-pricing date, zero coupon pricing
 - **Duration methods:** Modified, Macaulay, Credit, ATM, ATR
- Automatic price updates*
- Import of contract notes and A.I. technology to read them automatically*
- Automatic calculation and book-keeping of interest, instalments, purchase and sale of interest and accruals
- Amortized cost of bond premium / discount (IFRS)



* Requires Escali Data Manager and Services for import of contract notes

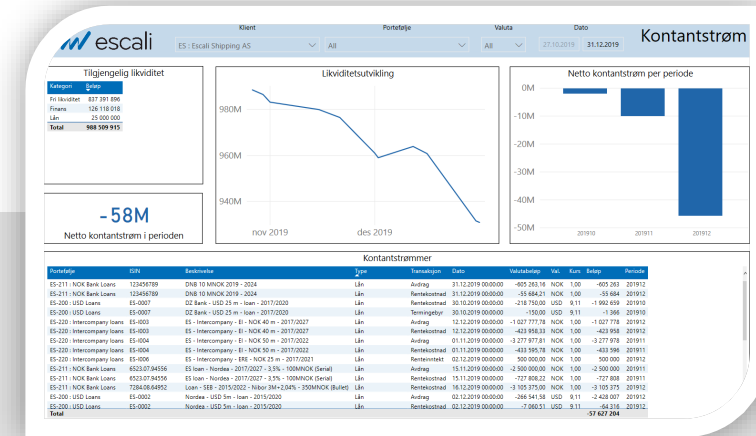
Equity derivatives

- Handles derivatives such as:
 - Options
 - Warrants
 - Forward / futures
 - Subscription Rights
- Handles Equity-, Freight-, Energy- and Commodity derivatives
- Pricing (M2M)
 - Black & Scholes (Options)
 - Net or Gross method on forwards
- Reporting related to derivatives including
 - Open derivatives
 - Maturity overview
 - Total exposure including option (Example: Samsung stock including options, Aluminium including options)
- Automatic calculation of profit/loss
- Automatic closing of derivatives
- Escali Financials follows the rules of accounting for options and forwards



Bank & Liquidity

- Support bank accounts
 - Operating accounts, savings accounts, time deposits
 - Automatic calculation of interest including posting of ledger transactions
 - Automatic posting and book-keeping of withdrawal on time deposits
- Automatic balance monitoring (import of daily balances)
- Import of master data, interest rates and transactions from Fixrate
- All financial cash flows from other modules available
- Support operational cash flows
 - Registration of variable and fixed cash flows
 - Import via file or automatic link to e.g. Sales system, Excel, ERP system (e.g. accounts payable and receivable)
- Liquidity dashboards in Escali Reports or 3rd party solutions (Power BI, Nomentia/Trezone)
- Cash Forecasting
 - Scenario analysis based on Interest and FX scenarios
- Export of cash flows to other 3rd party Cash Management Systems (IFS/Nomentia/Trezone)



Settlement and payments



- Settlement and payment of transactions directly in Escali Financials or export of payment data to other payment solution (ERP, Nomentia etc.)
- Handles the following formats:
 - DNB Markets
 - Danske Bank
 - Prime Brokerage (SEB)
 - BBS
 - Telepay
 - IFS
- Can supply our customers with Nomentia Payment Solutions
 - Handles all leading payment formats (SEPA, MT etc)

Risk Manager Module

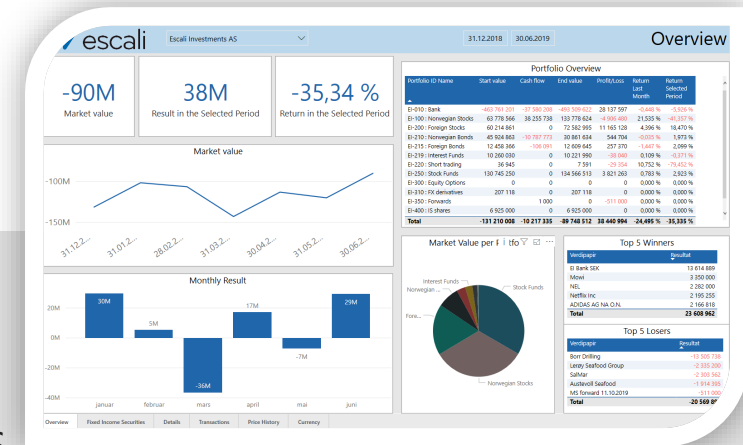


- Very flexible aggregation possibilities for modelling purposes
 - Makes it possible to follow up the most complex mandates and strategies
- Benchmarking including composite benchmarks
 - Can calculate the value of composite benchmarks (eg. 20% OSEBX, 60% MSCI World and 20% US Libor 3 months)
- Advanced strategy and mandate monitoring
- Modelreports / Dashboards
- Risk measurement (average, covariance, standard deviation, beta, alfa, information ratio, sharpe ratio, tracking error and coefficient of determination)
- Attribution analysis
- Allocation analysis

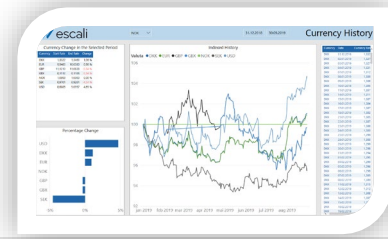
Escali Risk Manager	Fullversjon	Lite
Avanserte finansstrategier (fleksible aggregater)	V	V
Sammensatte benchmarks	V	V
Modellrapporter i Escali Reports	V	V
Risikotall (Standardavvik, beta, alfa, information ratio, sharpe ratio etc.)	V	V
Attribusjonsanalyse	V	V
Modul i Escali Financials	X	V
Stand-alone applikasjon med moderne grensesnitt	V	X
Automatisk knytning av nye instrumenter mot aggregater	V	X
Rapportgenerator bygget opp av rapportelementer (ca. 100 stykk)	V	X
Avansert rapportering av komplekse eierstrukturer inkl. indirekte eierskap	V	X
Value-at-Risk	V	X
Full-versjon av SQL Server	V	X
Overvåking av finansstrategier direkte i programvaren	V	X

General investment functionality

- Calculation of realized gain / loss:
 - FIFO
 - Weighted average
- Based on GIPS (Global Investment Performance Standard)
- Performance measurement based on total return method
 - Direct return (Dividends, Interest)
 - Realised gain / loss
 - Unrealised gain / loss (changes in rate)
- Periodic performance measurement in line with modern financial theory
 - Time-Weighted return
 - Money-Weighted return (Modified Dietz and Hardy's formula)
 - Chained Modified Dietz
- Performance per instrument, portfolio, client or consolidated.
- Performance against benchmarks
- Automatic book-keeping including realised and unrealised profit and loss and brokerage fees
- Complete audit trail for all transactions
- Import of contract notes and A.I. technology to read them automatically
- Pre-registration windows (front office)
- Good visualised reports / dashboards
 - Performance
 - Board and management reports
 - Allocation



General functionality



- Database (SQL Server)
 - Audit trail
 - All historical data are saved
- Available in the cloud (SaaS)
- Good reporting possibilities:
 - Over 200 predefined statically reports
 - Several dynamical reports / dashboards (Escali Reports)
 - Open interface to 3rd party solutions
- Possible to import / export data automatically via Escali Data Manager
 - Interest (Refinitiv, Bloomberg, Infront)
 - Currency rates (Central Bank of Norway, DNB Markets, Infront, Refinitiv, Bloomberg)
 - Market quotes (Refinitiv, Reuters, Bloomberg, Nordic Bond Pricing)
 - Transactions (Banqsoft, OpucCapita, Excel, contract notes)
 - Masterdata (Banqsoft, Nordic Trustee, Bloomberg)
 - Portfolio (Infront terminal + Bloomberg PORT)
- RF-1359
 - Export til Wolters Kluwer, Finale, Maestro and Cantor
- Multi-Client and multi-currency system
- Available in several languages
- Electronic documents / vouchers
- Fully integrated towards MS Office:
 - Export to Excel and Word
 - Import to Power BI, PowerPoint, Excel, Report Builder
 - Cut and paste functionality
- Access Control / Segregation of Duties:
 - Back/Middle/Front office
 - Clients
 - Tasks
 - Modules
- Easy-to-use / Familiar and user-friendly interface
- Easy access to database via Escali MasterViews:
 - Historical transactions
 - Future cash flows
 - Holdings and performance
 - Accounting transactions
 - Risk Measures

Accounting

- Approximately 50 export formats of ledger transactions:
 - SAP, Agresso, Visma, ShipNet, MS Dynamics AX/NAV, IFS, Economa, Danaos, UniMicro, Xledger
- Automatic posting of all transactions
 - Based on your Chart of Account and accounting rules
- Automatic bookkeeping of:
 - Amortized cost
 - M2M (unrealised and realised gain)
 - Interest (accrued and actual)
 - Instalments
 - Maturity
 - Commitment fees
 - Agio / Disagio (unrealised and realised)
 - Current Portion of long-term debt (IFRS)
- Handles unlimited accounting dimensions, e.g. project, service, object, department
- Based on all leading accounting standards: IFRS, US Gaap, Norwegian Gaap
- Electronic vouchers
- Automatic export of ledger transactions
- Automatic reconciliation between Escali and the ERP-system
- Accounting reports
- Accounting notes

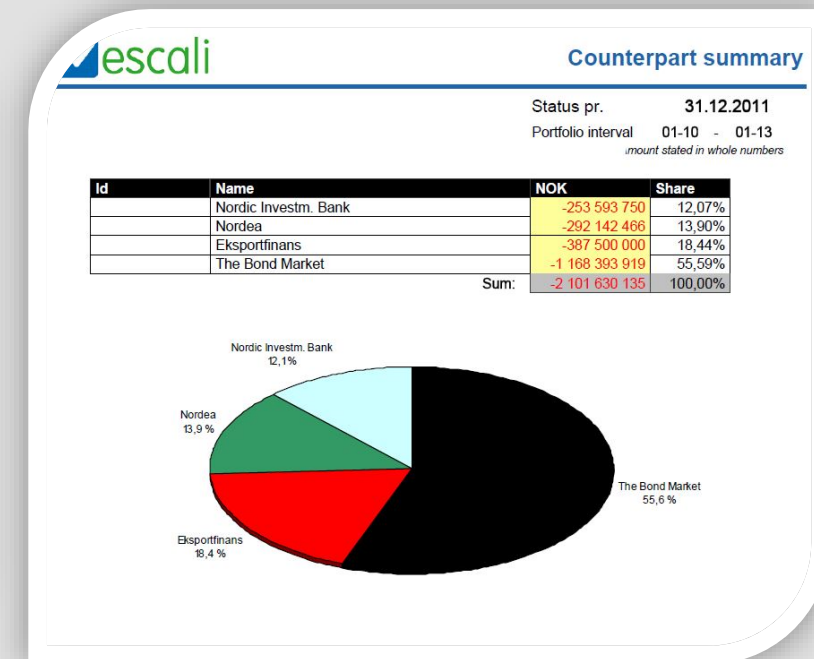
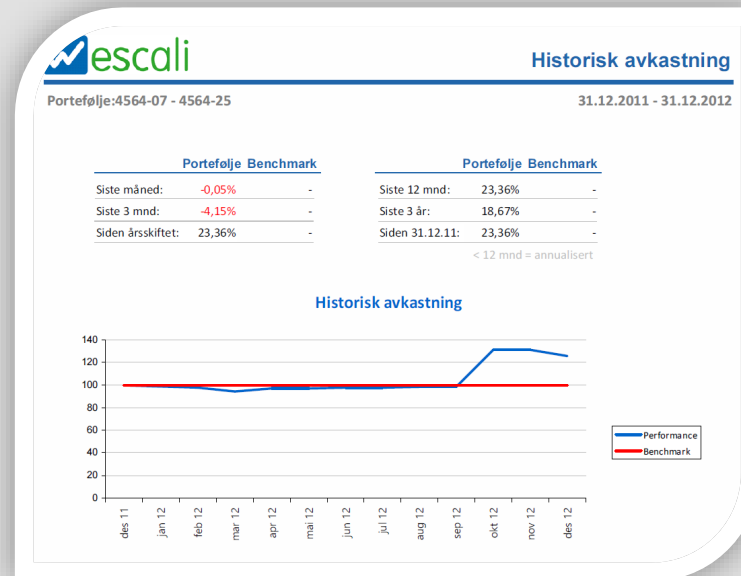




Reporting

Escali Financials

- Over 200 statical reports
 - Can change logo, date and portfolio interval

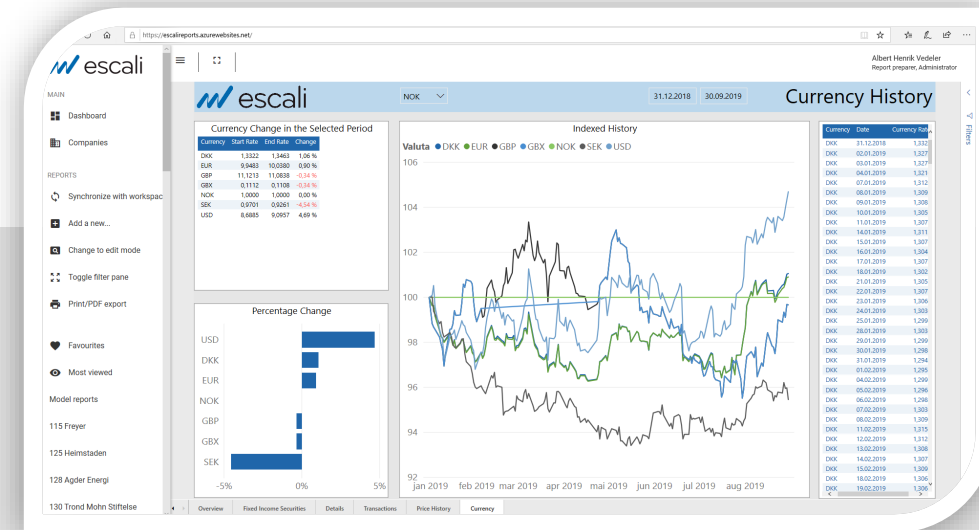


3rd party reporting systems

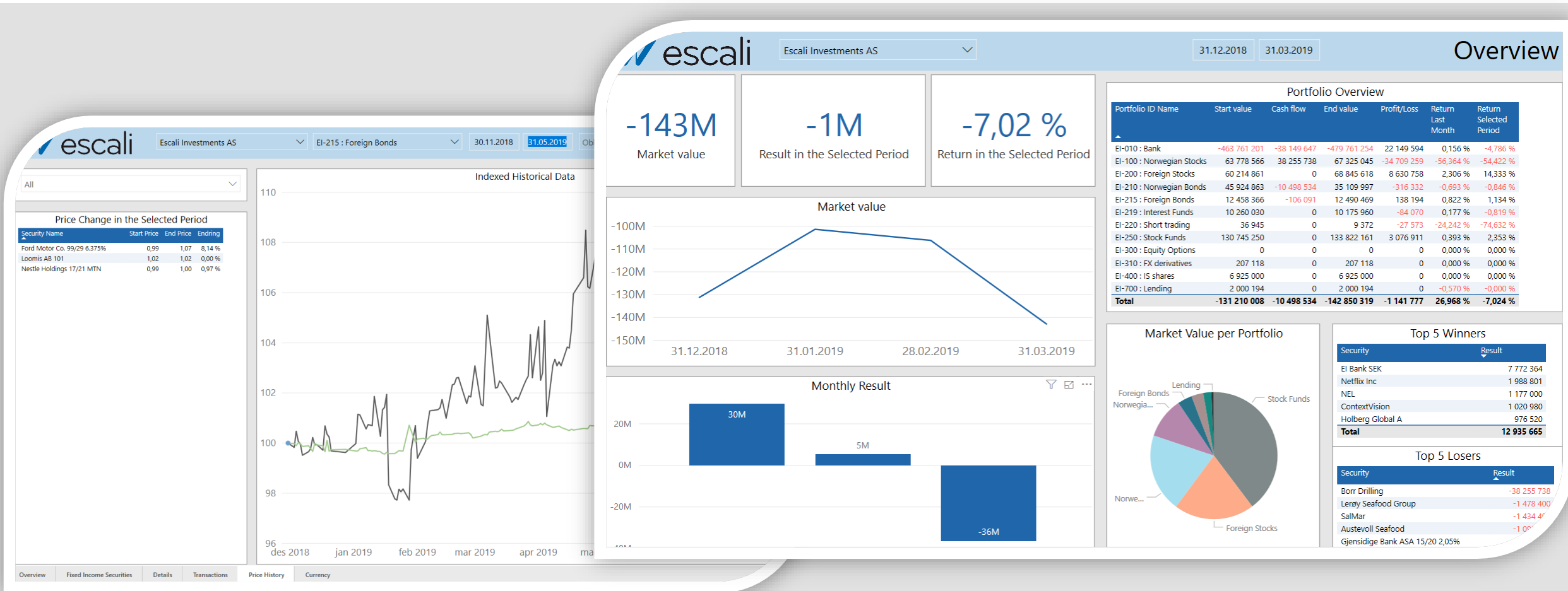
- Escali MasterViews makes it easy to get data to 3rd party solutions
 - Transactions
 - Accounting
 - Result/status
 - Risk Measures
- Customers use tools like
 - Excel
 - Power BI
 - Qlik
- We can customize reports in Power BI or Excel or help customers to gather data from the database to other solutions.

Escali Reports

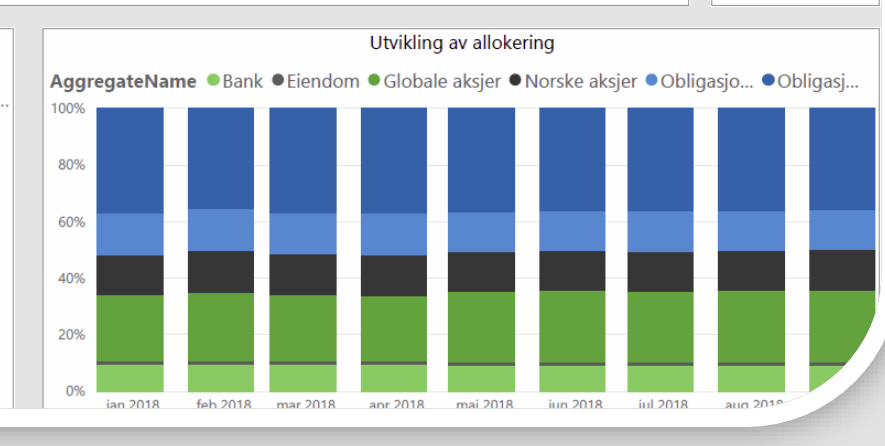
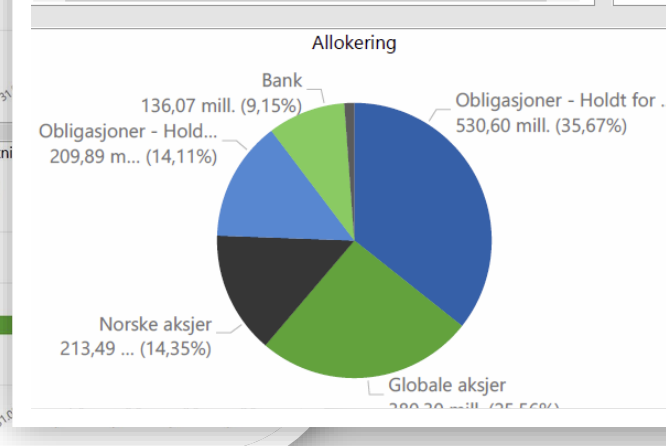
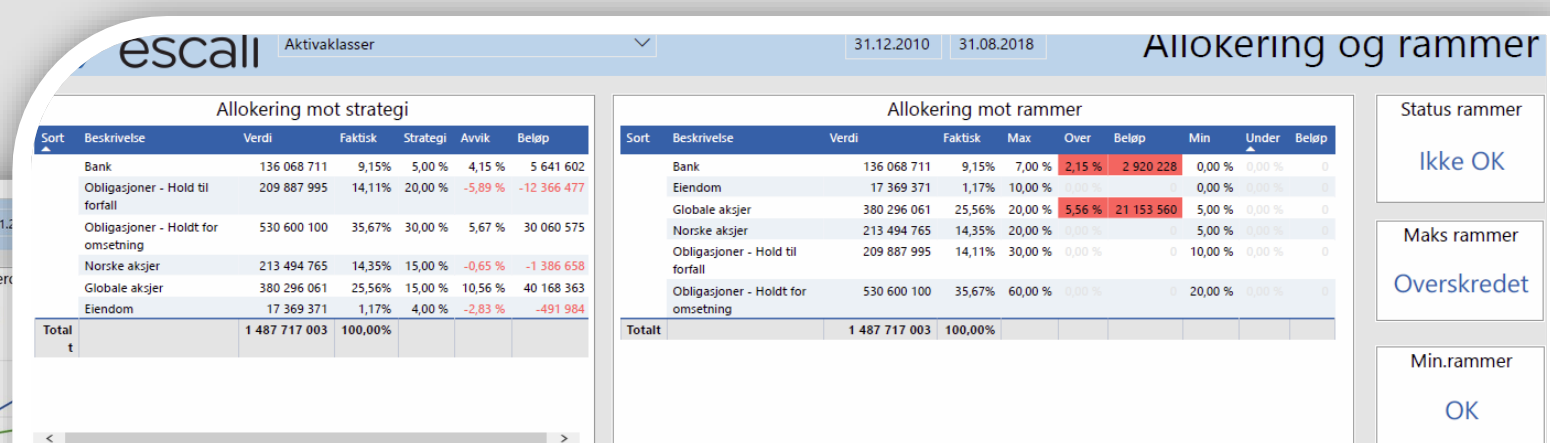
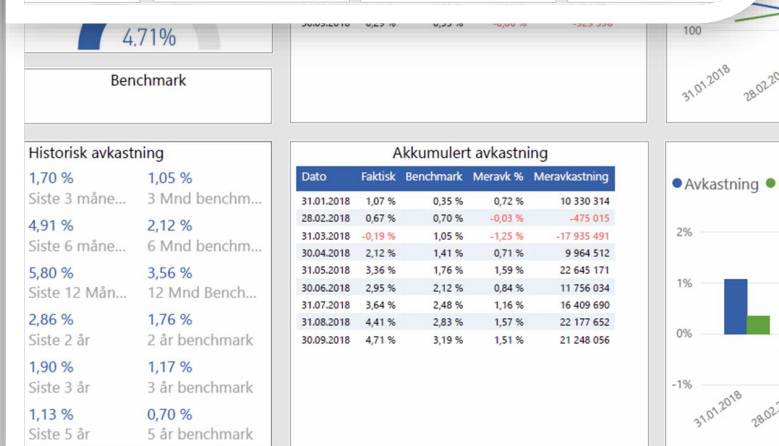
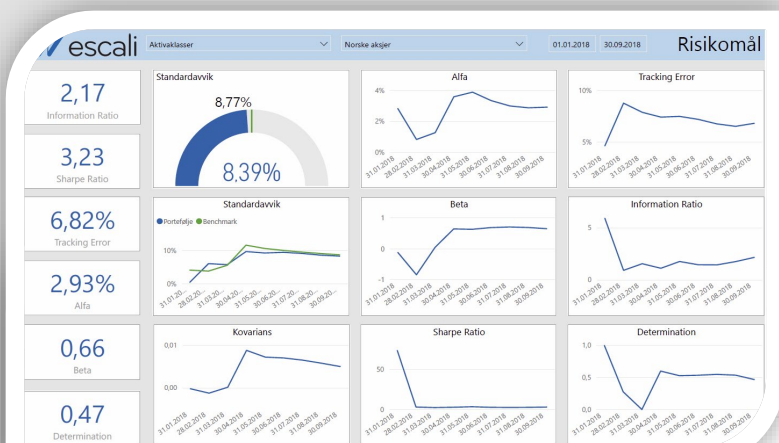
- Our own reporting tool online
- Dynamical reports with full drill-down functionality
- Gets data from the Escali Online environment
- Powered by Power BI embedded
- Delivered with model reports / dashboards:
 - Investments
 - Treasury
 - Risk Measures
 - Fund transparency & Ethical investments
 - IFRS Notes
 - Accounting
 - Leasing
- You can make your own reports or change the model reports



Escali Reports – Investment reports



Escali Reports – Risk Management reports



Why Escali Financials?



- Continuous control and better overview
- More efficient use of resources to avoid:
 - Multiple filing of financial transactions
 - Manual calculations
 - Production of numerous reports for the board, management, accounting, regulators etc.
 - Developing your own reports
- Large number of excellent visual reports and dashboards
 - Better overview and control
- Easy intergration with other systems
 - Flexibility / open interfaces
- Responsive and flexible supplier
- Module based / high scalability
 - Pay only for the functionality that you use
 - Good cost-benefit ratio
- Fewer error sources
 - No need for individual dependent spreadsheet models with possible error sources
 - Possible to import from data providers
 - Good control mechanisms in the system
 - Tested and used by leading companies
- Ease of use
 - Customised menus and other user friendly features
 - All transactions are recorded via one screen (independent of module)
 - Intuitive structure
- High customer satisfaction and solid references
 - Well tested by clients with comparable needs
- Software-as-a-Service
- Support and maintenance included



The Future
2019→

The Future

Our competitive advantage will primarily be:

- Handle regulatory requirements (IFRS, Solvency II, EMIR, Basel III)
- Automation, robotics and seamless integrations
- A flexible, reliable and dynamic supplier



We shall be:

«The Treasury function's autonomous car»

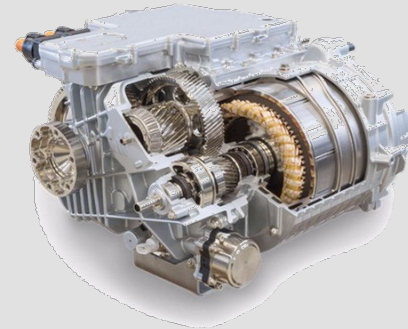
What should we do?



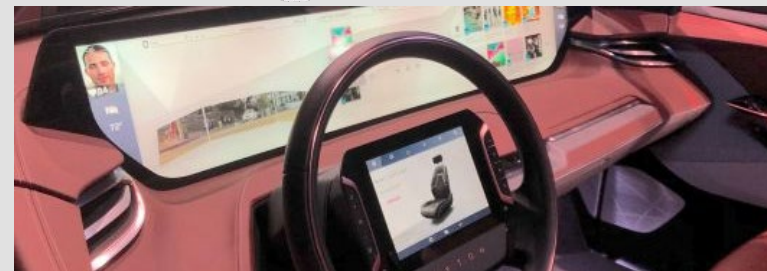
New front-end



New engine (Business layer)



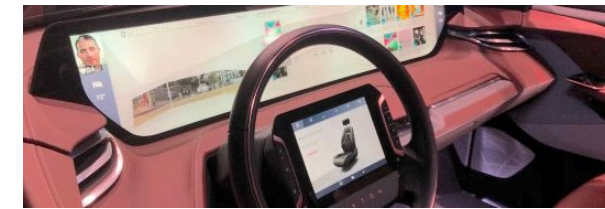
New output



Output



New output



Posteringsjournal

Escali Financials

Klient **Escali Forsikring**

Periode **201801 - 201812**
 Bumlint. **1 - 30000**
 Belap angitt i hele tall **NOK**

Burt **3207**

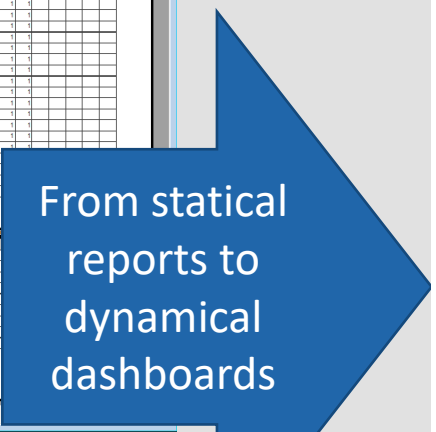
Bilagnr	Dato	Postisjon	Trans type	Anfald	Belap	Val	ValLok	Belap (ok)	Deb1	Kred1	Beskrivelse	Retfallag	Dr	Da	Dr	Dr
EF10803	31.01.2018	NIB Bank ASA 1318 FR	Plussere renten	1.00	147 282,0000	147 282	NOK	1.0000			Autogenererte plussere renten	1	1			
EF10803	31.01.2018	NIB Bank ASA 1318 FR	Plussere renten	-1.00	143 481,6700	-143 482	NOK	1.0000	-143 482		Autogenererte plussere renten	1	1			

Burt **3208**

Bilagnr	Dato	Postisjon	Trans type	Anfald	Belap	Val	ValLok	Belap (ok)	Deb1	Kred1	Beskrivelse	Retfallag
EF10804	31.01.2018	Bank Norwegen AS 13	Realiseringsgev.	1.00	171 900,0000	171 900	NOK	1.0000	171 900		Autogenererte realiserings gev	1
EF10804	31.01.2018	Bank Norwegen AS 13	Realiseringsgev.	-1.00	170 100,0000	-170 100	NOK	1.0000	-170 100		Autogenererte realiserings gev	1

05.12.2018 20:50:17

Page: 2



From static reports to dynamical dashboards

<https://escalireports.azurewebsites.net/>

escali

Klient: ES: Escali Shipping AS

Portefølje: All

Valuta: All

Dato: 27.10.2019 - 31.12.2019

Kontaktstrøm

Tilgjengelig likviditet

Kategori	Belap
Fin likviditet	837 391 896
Finans	126 118 018
Lån	25 000 000
Total	988 509 915

Likviditetsutvikling

Netto kontakstrøm per periode

-58M

Netto kontakstrøm i perioden

Portefølje	ISIN	Beskrivelse	Type	Transaksjon	Dato	Valutabelop	Val	Kurs	Belop	Periode
ES-211 - NOK Bank Loans	123456789	DNB 10 MNOK 2019 - 2024	Lån	Avdrag	31.12.2019 00:00:00	-605 263,16	NOK	1,00	-605 263	201912
ES-211 - NOK Bank Loans	123456789	DNB 10 MNOK 2019 - 2024	Lån	Rentekostnad	31.12.2019 00:00:00	-55 684,21	NOK	1,00	-55 684	201912
ES-200 - USD Loans	ES-0007	DZ Bank - USD 25 m - loan - 2017/2020	Lån	Rentekostnad	30.10.2019 00:00:00	-218 750,00	USD	9,11	-1992 659	201910
ES-200 - USD Loans	ES-0007	DZ Bank - USD 25 m - loan - 2017/2020	Lån	Terminggebyr	30.10.2019 00:00:00	-150,00	USD	9,11	-1366	201910
ES-220 - Intercompany loans	ES-1003	ES - Intercompany - EI - NOK 40 m - 2017/2027	Lån	Avdrag	12.12.2019 00:00:00	-1 027 777,78	NOK	1,00	-1 027 778	201912
ES-220 - Intercompany loans	ES-1003	ES - Intercompany - EI - NOK 40 m - 2017/2027	Lån	Rentekostnad	12.12.2019 00:00:00	-423 958,33	NOK	1,00	-423 958	201912
ES-220 - Intercompany loans	ES-1004	ES - Intercompany - EI - NOK 50 m - 2017/2022	Lån	Avdrag	01.11.2019 00:00:00	-3 277 977,81	NOK	1,00	-3 277 978	201911
ES-220 - Intercompany loans	ES-1004	ES - Intercompany - EI - NOK 50 m - 2017/2022	Lån	Rentekostnad	01.11.2019 00:00:00	-433 595,78	NOK	1,00	-433 596	201911
ES-220 - Intercompany loans	ES-1006	ES - Intercompany - ERE - NOK 35 m - 2017/2021	Lån	Rentemtekt	02.12.2019 00:00:00	500 000,00	NOK	1,00	500 000	201912
ES-211 - NOK Bank Loans	6523 07 94556	ES loan - Norda - 2017/2027 - 3,5% - 100MNOK (Serial)	Lån	Avdrag	15.11.2019 00:00:00	-2 500 000,00	NOK	1,00	-2 500 000	201911
ES-211 - NOK Bank Loans	6523 07 94556	ES loan - Norda - 2017/2027 - 3,5% - 100MNOK (Serial)	Lån	Rentekostnad	15.11.2019 00:00:00	-727 808,22	NOK	1,00	-727 808	201911
ES-211 - NOK Bank Loans	6784,08,64952	Loan - SEB - 2015/2022 - Nibor 3M+2,04% - 350MNOK (Bullet)	Lån	Rentekostnad	16.12.2019 00:00:00	-3 105 375,00	NOK	1,00	-3 105 375	201912
ES-200 - USD Loans	ES-0002	Nordea - USD 5m - loan - 2015/2020	Lån	Avdrag	02.12.2019 00:00:00	-266 541,58	USD	9,11	-2 428 007	201912
ES-200 - USD Loans	ES-0002	Nordea - USD 5m - loan - 2015/2020	Lån	Rentekostnad	02.12.2019 00:00:00	-7 060,51	USD	9,11	-64 316	201912
Total										-57 627 204



New front-end



Lån

Escali Financials

Lån

Lånenr: 13215464631 Beskrivelse: Repo lån - Nordic Semiconductor (FI20) - 170406-1705 Internett lånenr: Repo 4396

Basisdata Lånedata Avansert Nedbetalingsplan Renter Avdrag Rentesatser Panteobjekter Kategorisering Porteføljepsett Notater

Tilbakebetalingsmetode: Bullet

Rentebetalingsfrekvens: Årlig

Avdragsfrekvens: Årlig

Opptrekksdato: 06.04.2017 Torsdag

Forfallsdato: 06.07.2017 Torsdag

Første avdrag: 06.07.2017 Torsdag

Første rentebetaling: 31.01.2018 Onsdag

Neste rentereguleringsdato: 06.07.2017 Torsdag

Fast periodeavdrag:

Avdragsmodell:

Bankdagsjustering: Ingen bankdagsjustering

Fast rente Gjeldende rentesats: 2,779%

Flytende rente Gjeldende rentesats: 2,779%

Basisrente:

Rentemargin:

Varseldager: 0

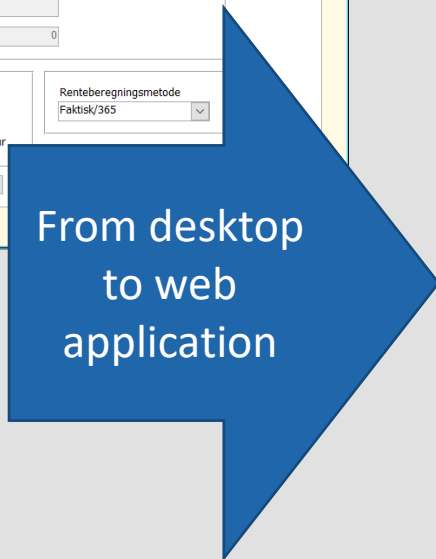
Benytt IMM datoer

Siste dag i måneden

Irregulær datostruktur

Renteberegningsmetode: Faktisk/365

Kopier fra annet lån



Search for anything

DNB - Loan NOK 250M - Nibor + 3.55% - 2015/2030

Selskapsnavn: Gamle data ISIN: 5704.08.98453 Token: L00024

ESH-999 - History

BASIS LÅNEDATA PANTEOBJEKTER KATEGORISERING TRANSAKSJONER MARKEDSDATA NOTATER

Lånedata

Lånestruktur

Lånebeløp 250 000 000,00

Valutalode NOK

Utstedesdato 28.10.2015

Forfallsdato 28.10.2030

Etableringsgebyr

Rentefrekvens Kvartalsvis

Tilbakebetalingsmetode Serie

Bankdagsjust. Ingen bankdagsjustering

Terminbeløp

Første rentebetaling 31.01.2018

Første avdrag 28.04.2018

Avdragsfrekvens Kvartalsvis

Termingebyr

Avdragsavrunding Ingen desimaler

Renteavrunding Ingen desimaler

Kalender Norsk standard

Benytt IMM datoer [No]

Siste dag i måneden [No]

Rentedata

FRN Flytende

Rente 4,75 %

Renteberegningsmetode Faktisk/360

Basisrente NIBOR3M

Rentetillegg 3,55 %

Første avdrag 28.04.2018

Flising-slager

Rentetak (Cap)

Rentegulv (Floor)

Rentekonvensjon Normal

Nedbetalingsplan

Drag here to set row groups

Type	Dag	Dato	Snittrente	Rentebeløp	Endrings hovedstol	Renter og avdrag	Gebyr	Over-/underkurs	Terminbeløp	Betalingsandel	Restsaldo	Fiksinnsdato
1	Onsdag	28.10.2015		0,00	-250 000 000,00	250 000 000,00	0,00	0,00	250 000 000,00		-250 000 000,...	
5	Torsdag	28.01.2016		-2 993 150,68	4 166 666,67	-7 159 817,35	0,00	0,00	-7 159 817,35		-245 833 333,...	

Status

New business layer

- Automatic saved performance
- Automatic interest fixing
- Cash flows
- Amortisations
- Electronic vouchers



New reports

- Escali.net Reports
- Model-reports



New front-end

- Loans
- Interest swaps
- Credit facilities
- Bank
- Dashboard
- Work lists





escali
data manager



Automate processes in Escali software solutions (robotics)

Facts

- Escali Data Manager is a service that supports multiple automatic imports, exports and tasks, also called robotics.
- Necessary to run Escali Reports and Electronic documents
- Escali Data Manager can run unlimited number of tasks
 - Import of master data from Nordic Trustee 08:04 a.m every morning
 - Import of rates from Bloomberg 06:00 p.m. and 06:00 a.m.
 - Import of balances from banks every day at 03:00 a.m.
 - Import of yield curves from Refinitiv every Friday at 08:45 p.m.
 - Export of portfolio data to Infront terminal every 6 hours every day.
 - Automated «Saved performance» every night at 02:00 a.m.
 - Automatic interest changes
 - Import of contract notes every minute between 09:00 a.m. and 09:00 p.m.

What the solution supports today?



Import of:

- Rates / Quotes
 - Refinitiv*, Bloomberg*, Infront*, Nordic Bond Pricing
- FX rates
 - Refinitiv*, Bloomberg*, Infront*, DNB Markets, The Central Bank of Norway, IFS
- Interest and yield curve data
 - Refinitiv*, Bloomberg*, Infront*, Escali (Nibor, Stibor, Euribor, USD Libor, Cibor, Nowa)
- Counterparty data
 - Banqsoft, Fixrate
- Master Data / Reference Data
 - Nordic Trustee (Bonds), Bloomberg(Bonds)*, Banqsoft (Loans), Fixrate (Bank Accounts)
- Transactions and balances
 - Banqsoft
 - CSV and Excel
 - Nomentia, all major banks (balances)
 - Fixrate
 - Contract Notes

Export of:

- Cash Flows
 - OpusCapita, Trezone, IFS
- Portfolio data (cost, currency, volume)
 - Infront terminal, Bloomberg terminal
- Transactions / Ledger transactions
 - Datawarehouse / BI solutions / Visma eAccounting / Visma.net / Visma Business / IFS / Agresso
- Payments
 - IFS
- FX rates
 - CoreView, Visma Global, Visma.net, Visma Business
- IBOR and swap rates
 - CoreView
- Other data (sector codes, market data, industry codes, balances, transactions, master data / reference data) to:
 - Datawarehouse / BI systems

Automated processes

- Save and lock performance/result for a period
- Automatic interest fixing

*Requires "Bloomberg Data Licence", «Infront Data Licence EOD» or "Refinitiv Datascope Select".



What can it support in the future?



Import of:

- Bank Balances (transactions)
 - ERP systems
- Rates / Quotes
 - Morningstar, Factset
- Interest and yield curve data
 - Factset
- Rating
 - Nordic Trustee (premium)
- Transactions
 - Infront, Bloomberg, eMarkets, FX All, FX360, OneTrader
- Accounts receivables / Accounts payables
 - ERP systems

Export of:

- FX rates to new ERP systems
- Ledger transactions to new ERP systems

Automated processes in Escali Financials:

- Auto-generate transactions



Why Escali Data Manager? (1)



- Automates imports, exports and processes.
 - Saves time and resources as all processes take place automatically at given times
 - Does not depend on individuals' skills to enter data
 - Runs regardless of whether you are on vacation, leave, holidays etc.
 - Do not need to "Save result" which is necessary to run Escali Reports
 - Import of Ibor-rates makes it possible to automate interest changes
- Better data
 - Provides better decisions
 - Avoid entry errors
 - Continuous data provides a better basis for calculating risk figures (standard deviation, beta etc.)



Why Escali Data Manager? (2)



- Flexible system
 - Can add new import and export on request
 - Can run multiple import / export / other processes in parallel in the background
 - Modular
- Possible to import historical data from for example Bloomberg and Infront.
- Possible to make ad-hoc imports and exports on the fly
- Well tested amongst our most professional customers
- Will automate far more processes in future releases
- A requirement to use Escali Reports and Electronical documents / vouchers in Escali Financials

